

Simpler remote !

Easy access even for PC beginners
Only 5 clicks to do

Corona disaster these days

In 2020, when it became a global pandemic, various industries were severely damaged.

It has become essential to avoid contact with people as much as possible in a situation where you do not know where and who is the corona, which is very different from the world before.

Some IT companies are doing well by embracing remote work.

However, general companies, shops, and business establishments cannot do remote work on personal computers everywhere.

Anyone can easily remote

There are already a lot of standard software for remote work, but it is not a ward for people who usually handle computers, but it seems that there are many things that are a little difficult for beginners and general people.

Also, general remote software is

- Installation required
- Invitation email required
- Some computer skills are required

Because of the above, not everyone can do it.

5 clicks on smartphones, tablets and PCs

The web reception is in the form of a connecting side and a receiving side, such as the customer side and the shop side.

We mainly perform reception work and sales work without contact.

Let's assume a general store.

Customers come to the store to see the products, and the clerk serves customers, listens to explanations, and makes purchases satisfied

Or in the case of a hospital

The patient comes to the hospital, accepts the reception, explains the symptoms, advances the medical department, has the doctor diagnose, and performs the treatment to become healthy.

Web reception makes this easy and non-contact.

Easy (customer edition)

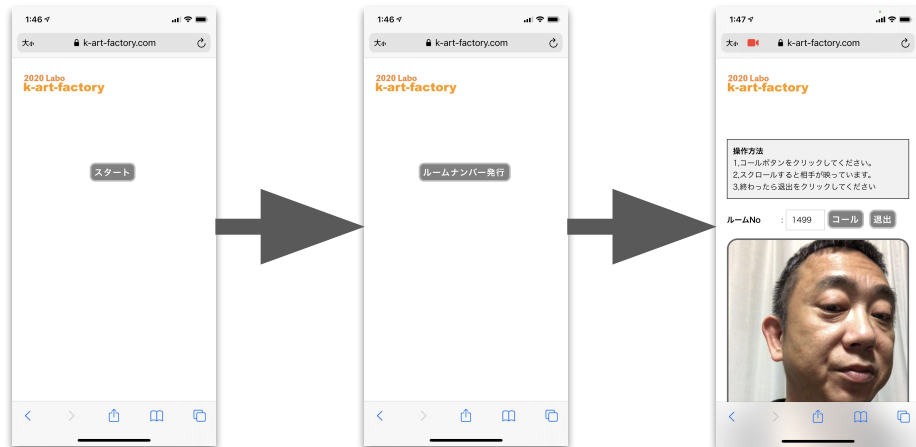
1, Access QR code or URL

2, click start

3, issue room number

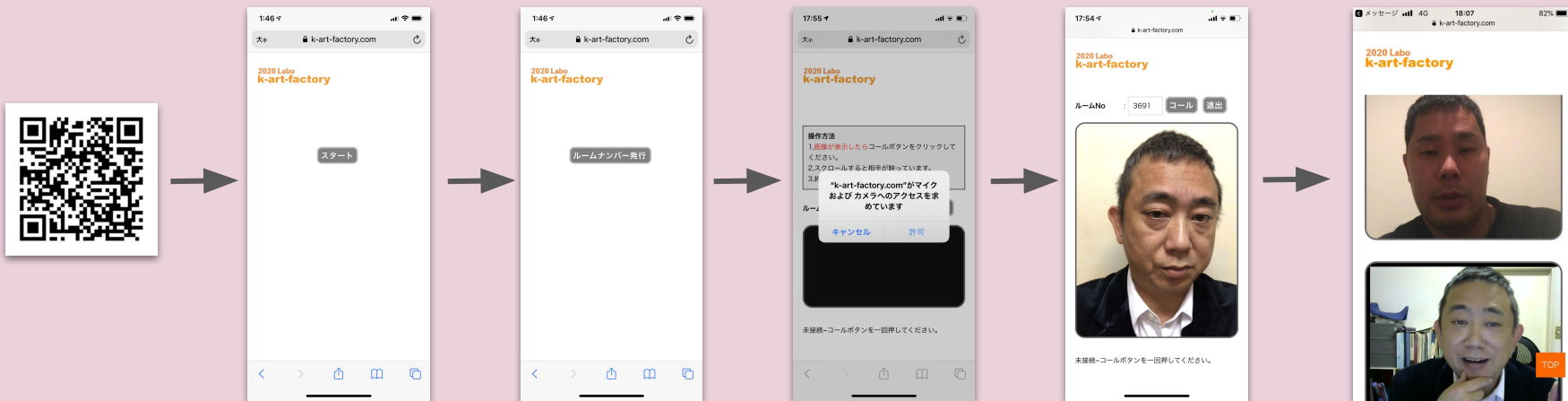
4, After displaying the screen, click the call to have a conversation, reception, business negotiation, and customer service.

5, Click Exit to finish



Operation manual (customer)

1. Customers access the URL (from the QR code).
2. click "Start"
3. click "Issue Room Number"
4. Allow "access to microphone and camera".
5. When the image is displayed, click "Call" (connect here)
6. When the conversation is over, click "Exit" to end



Operation manual (shop / business side)

1. The shop accesses the URL (from the QR code).
2. Enter your ID and password to display the management screen.
3. Click "Attendance" and "Chime reset" to wait for customer service.
4. When the chime sounds and "Visit" is displayed, click "Start customer service".
5. When the image is displayed, click "Call" (connect here)
6. When the conversation is over, click "○ × △ □ End Customer" to end the conversation
7. Click "Click here to wait for the next customer" and wait for customer service on the management screen.



Usage example

Liquor wholesaler Iwata Shoten

At a typical liquor store, customers usually come to buy sake directly. However, although we started selling online a few years ago, we took a number of pictures of the product and rewrote the description of the product each time, and one or two staff members can do the work. Sales haven't risen enough to hire people for online shops. The reality is that there are many people who can't do online shop operations. Even if there is sales from the online shop, it is hard to check emails because I am busy with my daily work. In addition, the system of the online shop is complicated and the work cannot be done in a short time.

If possible, like normal customer service

While customers come to the store and look at it

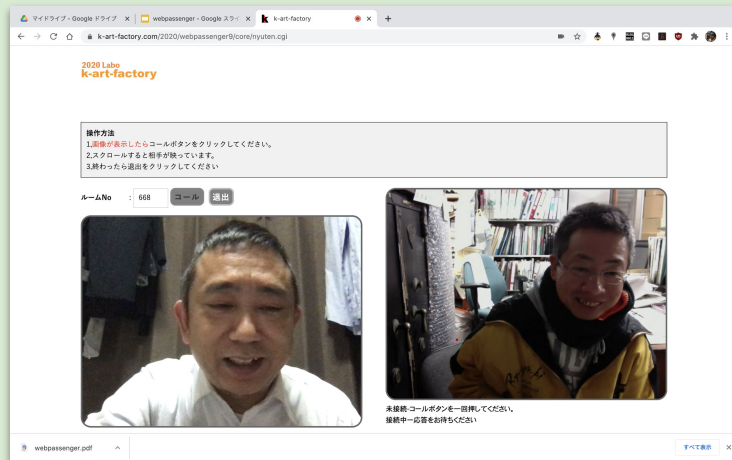
We want you to serve customers and satisfy our customers

And easy and simple

The merit is that you can easily proceed with the existing inventory

Being able to propose products at that time with ad lib

You can serve customers that only people can do, which cannot be done at an online shop.



Medical corporation Seishukai Kandatsu Hospital

We are considering introducing it to reduce the risk of infection in the reception work of general hospitals.

The original reception work is the staff that the patient first meets when they come to the hospital, and decides which medical department to lead from the conversation there. Of course, we measure and check the temperature at the entrance, but if there is a corona patient who passes through it, it is a great risk for the hospital.

With this system, you can completely avoid the risk because it is completely non-contact.

Another advantage is that you don't have to go to work, which reduces labor costs.

Installation is easy because the installation is just a link from the existing homepage.

Also, since the operation is very simple, there is no need for training, and even if it is operated, it will not be a burden on the current work.



Tsuchiura City Chamber of Commerce

Originally, the style of the Chamber of Commerce and Industry was "a place where commercial people in the city gather", but due to the influence of the recent Corona, it has become a must to act to avoid the Three Cs.

The reason for introducing this system this time is that every year from February to March, we hold a consultation meeting for final tax returns for business and industry members.

This counseling session is part of the main work of the Chamber of Commerce and Industry, so I cannot stop it.

If this is done by a so-called general remote, our work is complicated, and the users are also complicated, and it is expected that it will cause confusion even though many people are already using it. It was. Therefore, as a result of searching for a system that avoids the Three Cs while eliminating such disadvantages, we arrived at this system.

The merit is

1. Simple and easy to use
- 2, easy to install
3. Low cost (1 screen, monthly subscription of 5,000 yen)
4. Reduction of infection risk



Elderly housing with service Healing house Ai

Newspapers and magazines show that clusters occur in nursing care facilities, elderly housing, day services, etc. due to the recent influence of corona.

We also took this matter seriously, not for each other, and were thinking about how to deal with it.

When a user's family is visited and an emergency is declared, the situation is that they have to abandon the visit, which makes the user and his / her family feel really lonely. I felt sorry for that.

In addition, our staff lacks the skill to use up remote software, and it was difficult to deal with such a situation.

However, since the operation of this system can be done with just 5 clicks, all the staff could use it just by writing the procedure manual on the sticker next to the computer. Although it is not 100%, I am happy that I was able to contribute to the smiles of users and their families.



walkon

We are a company that provides a wide range of consulting services, from consulting services for general companies to individual coaching.

In the case of consulting projects for general companies, it may be smooth to respond with major remote software.

In the case of a large number of people vs. me, it is common to hold a meeting of about 30 people remotely at once,

There is a difference in the maturity of the meeting from what is done in the actual meeting room.

As a result, it tends to be a matter of individual consultation.

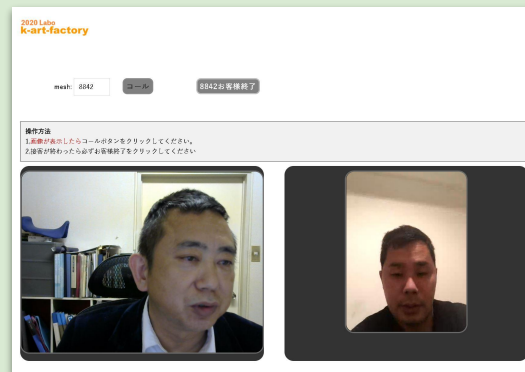
Also, if you are an individual customer and want to make a payment remotely,

There is no payment method for general remote software.

For this system.

Because you can make payments using paypay

For example, it is possible to charge a usage fee for one coaching.



Other usage examples

Individual remote learning cram school

Those who distributed the QR code to the students and accessed it will pay with paypay

Fortune-telling

Those who distributed the QR code to the customer and accessed it pay with paypay

Reception work in general

It is recommended to introduce the reception work that seems to be crowded to avoid three crowds.

Store sales

Collect customers digitally and sell in analog

Let's sell more and more products in stores with ad lib.

Specification

Prerequisite

Devices that can use audio and video and can connect to the Internet

Browser that can play audio and video

Customers are requested to register for paypay.

K-art-factory Co., Ltd.

Address: 5-10 Kasumigaokamachi, Tsuchiura City, Ibaraki Prefecture

TEL: 050-7561-5169

mail: info@k-art-factory.net

Founded: 1996 Stocks from 2017

Representative Director: Katsumi Watanabe

URL <https://www.k-art-factory.com>